



**WESTERN WOMENS
LACROSSE LEAGUE**

RULES AND ARBITER SPORTS

REVIEW SESSION

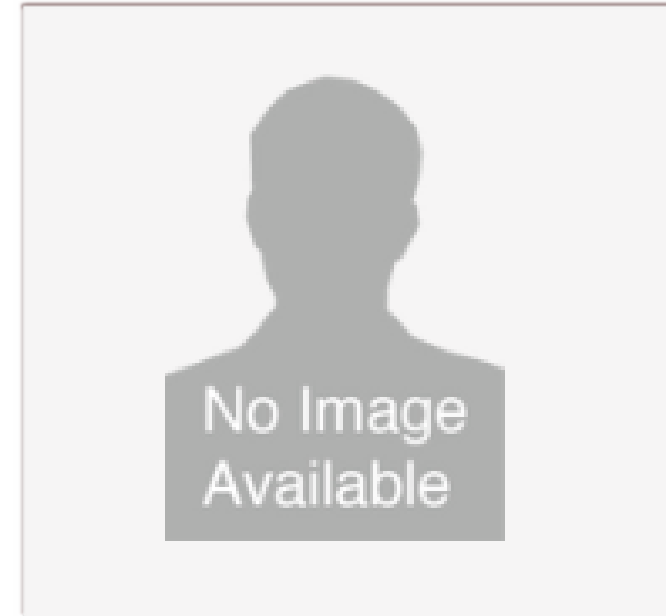
www.wwll.com



Beverly Lynch
Central CA Assignor



Alicia Oswald
South CA Assignor



Dave Woodson
AZ & Vegas Assignor



Laura Jennings
North CA & Reno Assignor

OUR AMAZING TEAM



Tyrone Koen
WCLA Officials Rep



Dana Crompton
WWLL Officials Liaison



ASST COMMISSIONERS

North Division Teams

D1- Tom Perry, St. Mary's

D2- Joseph Manna,
Dominican

Central Division Teams

D1-Sarah Duncan, UCLA

D2-Pam Lewin, Fullerton

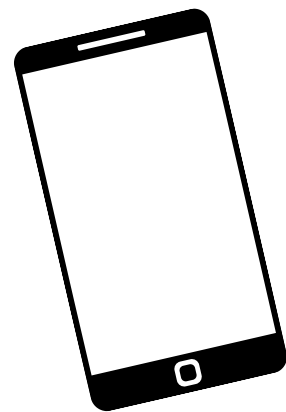
South Division Teams

D1-Denise Yee, San Diego State

D2-Pam Lewin, Fullerton

GAME CHANGES

- Need the Asst. Commissioner approval, copy the assignor.
- Then confirmation from the assignor that officials are available.
- Once Approved
 - a. **For Central CA, South CA and AZ/Vegas**- Email the assignor the game change details
 - a. **North Schools**-Use google form that the assignor checks every morning.
 - i. *WWLL North D1, D2 & Provisional Game Change, Cancellation or Addition Form*



**Less than 48 hours
Text the Assignor for ALL REGIONS**



WWLL North D1, D2 & Provisional Game Change, Cancellation or Addition Form

Please submit all changes, additions and cancellations using this form for WWLL North games ONLY. If a change will occur within 48 hours please TEXT 707-624-6425 so that the assignor can start right away on changes.

This form is in addition to getting your change approved by the WWLL Asst Commissioner. (2 step process)

+
+

Black Out Dates for Officials Availability EVERY SEASON are:

Last Sunday in January

First weekend in February (May schedule a game after 5pm on this weekend)

Last weekend in February (may schedule a game after 5pm on this weekend) This is a HS and youth Play Day weekend.

No games on March 5, 2023.

ARBITER SPORTS



CHECKING GAMES

www.arbitersports.com

- Use the team email on the WWLL website
- Reset password with reset button
- Games are under schedule tab



COMMUNICATION

Majority of games have officials assigned. You may contact them **NOW** about the payment process.

- Click on the officials name when you view your game.
- Click on the numbers to the far right of your game (ex: 2/2)
- Official info will appear. (email and phone)
- These are confidential and not to be added to any database or cloud storage.



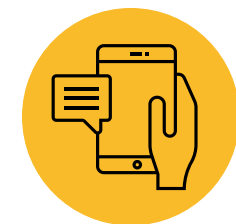
PAYING OFFICIALS



TASK VARIES BY SCHOOL

School Process- send paperwork needed to officials NOW

- a. IF USING ARBITERPAY- no action needed
- b. If paying at the field with a check- no action needed
- c. For North Teams that need vendor forms completed- copy the assignor (ljennings2021@gmail.com)
- d. WWLL bylaws- payment must be made at the time of services (at the field).



TRAVEL FEES

Determined by WWLL Bylaws, p.9

- a. "Mile traveled exceeding a grace of 25 miles round trip at the current IRS Standard Mileage Rate"
- b. Budgeting for games (Sample Team Invoice [HERE](#))
- c. Schools can log into arbiter to see travel fees now

RESOURCES

Voucher or Arbiter Pay feature in Arbiter is a resource for schools to determine the amount the officials must be paid. (Example [HERE](#))

	Games	Print
	3	
	2	
	10	
Exit		



Official's Payment Voucher

Women's Lacrosse of Sonoma State
 1801 East Cotati Ave
 Rohnert Park, California 94929

Date: 1/23/2022

Game #	Date & Time	Sport & Level	Site	Home	Away
3174	3/6/2022 1:00 PM	Lacrosse, Division 2	Sonoma State Field, Sta	Sonoma State	San Jose State
Official	Laura Jennings				Game Fee: \$ 140.00
	Officials Mailing Address				Perdiem: \$ 0.00
	C: Officials Cell Phone Number	Signature: _____			Travel: \$ 56.35
	H: Officials Cell Phone Number	Date: _____			
	H: Officials Cell Phone Number				Total: \$ 196.35
Official	Tanisha Bernard-Tucker				Game Fee: \$ 140.00
	Officials Mailing Address				Perdiem: \$ 0.00
	C: Officials Cell Phone Number	Signature: _____			Travel: \$ 52.90
	H: Officials Cell Phone Number	Date: _____			
					Total: \$ 192.90

RESOURCES

- PAYMENT VOUCHER
- PAY DASHBOARD
- ARBITER PAY

ArbiterPay	Pay Dashboard	Games	Print
Pay Officials	Pay Dashboard	3	
		2	
		10	

Exit

PAYROLL LISTS PROFILE REPORTS

Master Schedule

All

Unpaid

Paid

No AP Account

Approve Payments (Saint Mary's College of California)

Only the first 50 payments selected will be processed.

Pay (0) No Ar...

No valid payments found.

Balance \$0.00

Payment Total \$0.00

RESOURCES

- **PAY DASHBOARD**
- **ARBITER PAY**

**NO ACCOUNT
SET UP VIEW**

PAYROLL LISTS PROFILE REPORTS

Master Schedule

All

Unpaid

Paid

No AP Account

Approve Payments (Dominican University of California)

Only the first 50 payments selected will be processed.

Pay (0) **Paying Account** 1266538450 **PIN** [Forgot PIN?](#) **TIN** 94-1156525

Balance \$1 [REDACTED]

Payment Total \$0.00

Hamilton, Scott 3282	Lacrosse, Division 2 Official	10/2/2022 10:00 AM	Total	\$ [REDACTED]	10/5/2022 Transaction Successful	Joseph Manna	● ● ●
Sandusky, Dave 3282	Lacrosse, Division 2 Official	10/2/2022 10:00 AM	Total	\$ [REDACTED]	10/5/2022 Transaction Successful	Joseph Manna	● ● ●
Elder, Mark 3283	Lacrosse, Division 2 Official	11/12/2022 3:00 PM	Total	\$ [REDACTED]	11/13/2022 Transaction Successful	Joseph Manna	● ● ●
Grice, Tim 3283	Lacrosse, Division 2 Official	11/12/2022 3:00 PM	Total	\$ [REDACTED]	11/13/2022 Transaction Successful	Joseph Manna	● ● ●

**ACTIVE
ACCOUNT
VIEW**

EVALUATING OFFICIALS

Officials evaluations and feedback on performance

- The WWLL did not activate the evaluation feature in arbiter sports.
- If you have any issues at a game with an official or opposing team, please email the assignor.
- If the assignor is one of the officials please contact the Assistant Commissioner for your area.
- If the commissioner is the person you had an issue with please email one of the assignors.
- Please send in POSITIVE reports to encourage those individuals.

Feedback will be collected and passed along to the appropriate contact at league level.





PRE-GAME SET UP

THE BASICS

- Restrooms, parking, water jug, cones, scoreboard, game clock, penalty timer and field lines
- Athletic Trainer or access to medical

ATMOSPHERE

- Music -Under no circumstance are explicit lyrics allowed at any level game, usually during warm up and half-time.
 - No exception. It must be corrected immediately.
 - NCAA standards- no offensive or inappropriate lyrics
 - We play by NCAA rules as a league.
- Score table personnel - make sure they have been trained, have a score book and are attentive to the game.
- Sportsmanship- keep games fun and fair



RULES REVIEW

2023 is the 2nd year of a two year rules cycle. The NCAA Rule book is available for download as a PDF from [NCAA.org](https://www.ncaa.org)

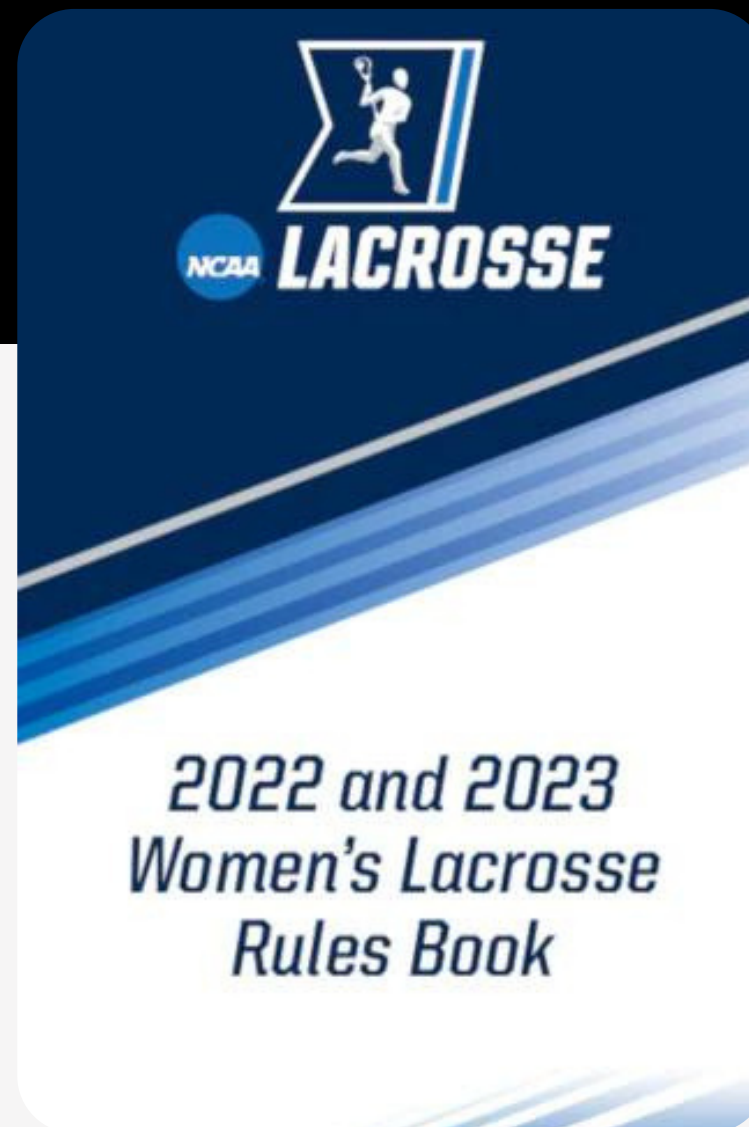
[NCAA Rule Changes 2022](#)

[WCLA Rule Modifications](#)

Q&A

OFFICIALS EXPECTATIONS

Reminder that our officials are expected to maintain professionalism, call fouls, use the language of the rule book and administer penalties according to the rules.





TRAINING REQUIREMENTS

WWLL is continuing to follow the WCLA /CWLOA requirements.

USAL Officials
Membership and
cleared background
check.

Pass the Annual
NCAA Test by Feb 1st

- Must be a CWLOA member to access test
- Education section as the "CWLOA Rules Test"

View CWLOA webinars or
videos– optional

- Annual Focal Points
- Mechanics and Protocols
- Annual Rules Interpretation
- Rules Revisited

OFFICIALS RATINGS



FOR 2023

- WWLL emphasis is on using CWLOA rated (C, CS, NE) and status (T) officials before assigning USAL rated officials (L3/L2).
- Notification was sent out late December from arbitersports.com



FOR 2024

- Institute a sliding pay scale for games so that officials with a CWLOA rating or status (transitional) are paid the full game fee. USAL level 3 will be paid slightly less.
- Only use USAL Level 2 officials if no others are available. Must have met WCLA/CWLOA requirements.



PREPARING FOR 2024

- Maintain an active membership with CWLOA and monitor their website for summer and fall clinics.

Attend a clinic for a rating:

- If USAL L2 and L3 officials wish to work WCLA club games, they are encouraged to attend a Transitional clinic and request to work as many 3 person games leading up to that clinic.
- Transitional Status USAL officials should contemplate pursuing the Collegiate rating.
- Current CWLOA officials should manage their ratings.

THANK YOU



WESTERN WOMENS LACROSSE LEAGUE

CONTACT US

Laura Jennings, North Assignor

Beverly Lynch, Central Assignor

Alicia Oswald, South Assignor

Dave Woodson, AZ and Las Vegas Assignor

Dana Crompton, WWLL Asst. Commissioner of Officials